



TRZ Anti-Roll Bar Builders Kit / Girth Brooks

Includes 5" or 6" Billet Steel Anti-Roll Bar Arms



Includes End-Caps w/Crossmember Style Mounting Tabs



Or Under-Housing Mounting Tabs



Includes HD Un-welded End-Link Kit



Includes 1-5/8" ARB Main Tube & 2-1/4" Outer Tube



Includes Spacer Rings

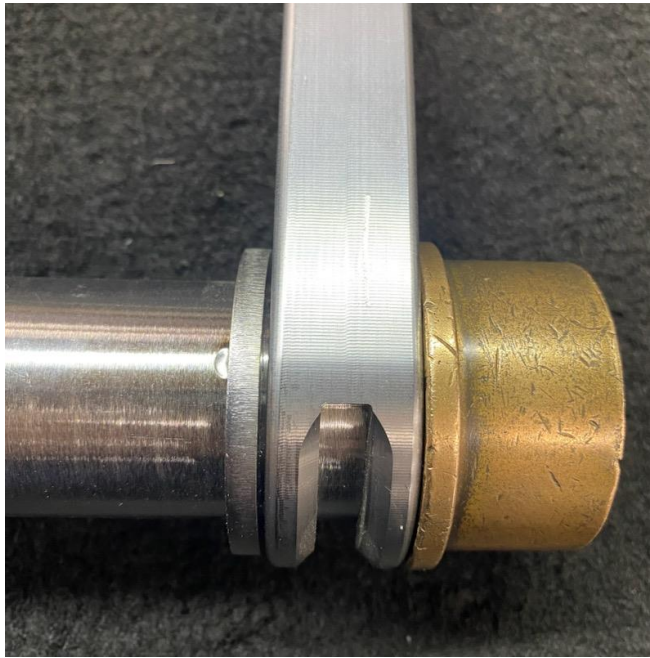


Anti-Roll Bar Assembly:

The Main ARB tube is sent roughly 28"-3/8" long which allows for a max center to center width of 25"1/8". This main tube can be shortened to achieve your desired center to center measurement. The way we assemble our pre-welded Anti-Roll Bars, the end of the main Anti-Roll Bar tube engages the entirety of the bronze bushing inside of the end caps.



Once you determine your center to center, mockup ARB arms onto main tube to determine the location of the (2) spacer rings. There should be a 1/16" gap between the outside of each ring & the inside of the ARB arm.



Now place (3) tack welds, welding the spacer rings to the ARB main tube.



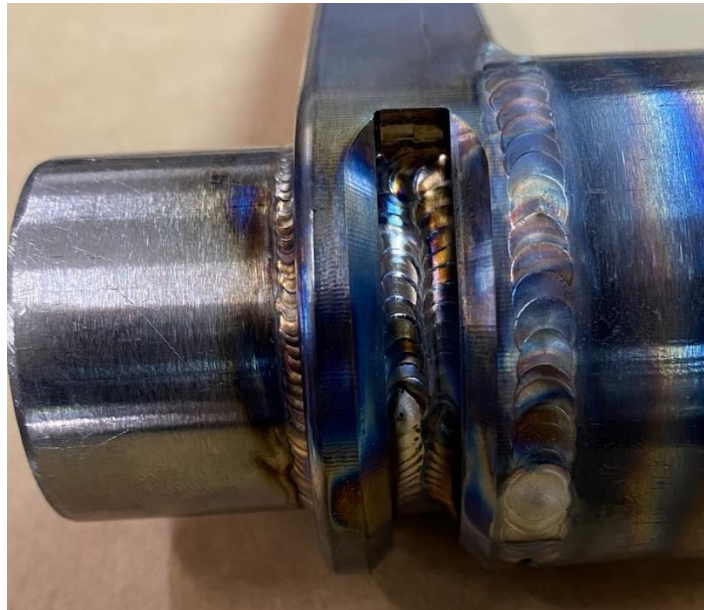
Then fit the outer tube over the spacer rings, THIS WILL BE TIGHT. Place (1) tack weld on each spacer ring to the outer ARB tube.



Now weld the spacer rings to both the inner & outer ARB tubes.



The Anti-Roll Bar arms must be tig welded to the inner & outer tube. If other methods are used, your welds may not clear the chamfer on the bronze bushings. This could cause the Anti-Roll Bar to not be able to freely travel through its necessary range of motion.



When welding the Anti-Roll Bar Arms to the main tube, the end of the tube will become distorted. This will require that you sand the inside diameter of the bronze bushings in order for the end of the Anti-Roll Bar main tube to slide inside of bronze bushing. The Anti-Roll Bar should be able to swing freely in a 360-degree motion inside of the end cap. How loose or tight is up to the end user. Air tools will work best for this. Work the sander carefully in a 360-degree motion until you achieve the desired results.

DO NOT MACHINE THE END OF THE MAIN TUBE TO FIT INSIDE OF THE BRONZE





End Link Assembly:

The End-Link tubes are sent roughly 12" long, these are intended to be cut to length, if need be. Once the tube inserts are in place inside of the tubes, they do not require plug welds, just welding of the inserts to the tube itself.

REMINDER:

This is a fabricators kit. If you do not have fabrication experience, experience with the installation of Anti-Roll Bars or their function / purpose, please ask questions **PRIOR** to assembly.