



TRZ Modular Anti-Roll Bar Builders Kit

Includes 6" or 7" Aluminum Anti-Roll Bar Arms

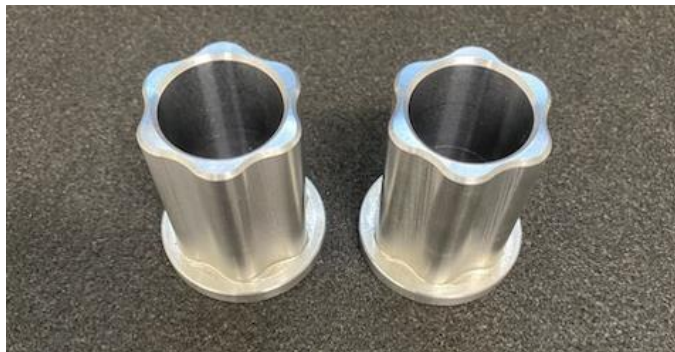


Includes End-Caps w/Delrin Bushings & Crossmember Style Mounting Tabs

(Cross-Member NOT Included)



(2) Spindles



Includes HD Un-welded End-Link Kit



Includes 1-1/4" ARB Main Tube & 2-1/4" Outer Tube



Anti-Roll Bar Assembly:



TIG WELD EVERYTHING FOR BEST RESULTS. We like to set the Spindle flange centerline on the end of the outer tube. Weld the inner tube to the Spindles. Weld Spindles to Outer Tube. Make sure that the weld doesn't protrude past the face of the Spindle flange. The backside of the spindle flange should also be welded to the 1-1/4" tube.

End Cap Mounting



End Caps can mount inside or outside of the ARB Arm. You can flip the End Caps 180 degrees in either mounting position to move the cross-member tabs inboard or outboard. The delrin bushing can be flipped in either direction. Hardware MAY need to be flipped for clearance, depending on mounting configuration. **You MUST run the ARB through travel & check for clearance before final install.**

End Link Assembly:

The End-Link tubes are sent roughly 12" long (1" OD), these are intended to be cut to length, if need be. Once the tube inserts are in place inside of the tubes, they do not require plug welds, just welding of the inserts to the tube itself.

Apply a small amount of grey anti-seize between the delrin bushings & the End Caps before final install.

Apply a small amount of red loctite on the ARB Arm bolts before final install & torque arms at 10 – 15 ft-lb.

REMINDER:

This is a fabricators kit. If you do not have fabrication experience, experience with the installation of Anti-Roll Bars or their function / purpose, please ask questions **PRIOR** to assembly.